

**AURO**<sup>™</sup>

Audi A3-B001

# TUTORIAL

[www.aurodiag.com](http://www.aurodiag.com)

## Trademarks

---

Auro™ and OtoSys™ are trademarks of Shenzhen HC Tech CO., Ltd., registered in China, the United States and other countries. All other marks are trademarks or registered trademarks of their respective holders.

## Copyright Information

---

No part of this manual may be reproduced, stored in a retrieval system or transmitted, in any form or by any means, electronic, mechanical, photocopying, recording, or otherwise, without the prior written permission of Auro.

## Disclaimer of Warranties and Limitation of Liabilities

---

All information, specifications and illustrations in this manual are based on the latest information available at the time of printing.

Auro reserves the right to make changes at any time without notice. While information of this manual has been carefully checked for accuracy, no guarantee is given for the completeness and correctness of the contents, including but not limited to the product specifications, functions, and illustrations.

Auro DOES NOT promote or encourage ANY illegal activities, all contents provided by Auro is meant for VEHICLE MAINTENANCE only.

Any action you take upon the information from this manual is strictly at your own risk, Auro will not be liable for any direct damages or for any special, incidental, or indirect damages or for any economic consequential damages (including lost profits).

## For Services and Support

---



[www.aurodiag.com](http://www.aurodiag.com)



[support@eurodiag.com](mailto:support@eurodiag.com)

For technical assistance in all other markets, please contact your local selling agent.

## Safety Information

---

For your own safety and the safety of others, and to prevent damage to the device and vehicles upon which it is used, it is important that the safety instructions presented throughout the product user manual be read and understood by all persons operating or coming into contact with the device.

There are various procedures, techniques, tools, and parts for servicing vehicles, as well as in the skill of the person doing the work. Because of the vast number of test applications and variations in the products that can be tested with this equipment, we cannot possibly anticipate or provide advice or safety messages to cover every circumstance. It is the automotive technician's responsibility to be knowledgeable of the system being tested. It is crucial to use proper service methods and test procedures. It is essential to perform tests in an appropriate and acceptable manner that does not endanger your safety, the safety of others in the work area, the device being used, or the vehicle being tested.

Before using the device, always refer to and follow the safety messages and applicable test procedures provided by the manufacturer of the vehicle or equipment being tested. Use the device only as described in this manual. Read, understand, and follow all safety messages and instructions in this manual.

## Safety Messages

---

Safety messages are provided to help prevent personal injury and equipment damage. All safety messages are introduced by a signal word indicating the hazard level.

---

### **DANGER**

Indicates an imminently hazardous situation which, if not avoided, will result in death or serious injury to the operator or to bystanders.

---

---

### **WARNING**

Indicates a potentially hazardous situation which, if not avoided, could result in death or serious injury to the operator or to bystanders.

---

## Safety Instructions

---

The safety messages herein cover situations Auro is aware of. Auro cannot know, evaluate or advise you as to all of the possible hazards. You must be certain that any condition or service procedure encountered does not jeopardize your personal safety.

## DANGER

When an engine is operating, keep the service area WELL VENTILATED or attach a building exhaust removal system to the engine exhaust system. Engines produce carbon monoxide, an odorless, poisonous gas that causes slower reaction time and can lead to serious personal injury or loss of life.

---

## SAFETY WARNINGS

- Always perform automotive testing in a safe environment.
- Wear safety eye protection that meets ANSI standards.
- Keep clothing, hair, hands, tools, test equipment, etc. away from all moving or hot engine parts.
- Operate the vehicle in a well ventilated work area, for exhaust gases are poisonous.
- Put the transmission in PARK (for automatic transmission) or NEUTRAL (for manual transmission) and make sure the parking brake is engaged.
- Put blocks in front of the drive wheels and never leave the vehicle unattended while testing.
- Be extra cautious when working around the ignition coil, distributor cap, ignition wires and spark plugs. These components create hazardous voltages when the engine is running.
- Keep a fire extinguisher suitable for gasoline, chemical, and electrical fires nearby.
- Do not connect or disconnect any test equipment while the ignition is on or the engine is running.
- Keep the test equipment dry, clean, free from oil, water or grease. Use a mild detergent on a clean cloth to clean the outside of the equipment as necessary.
- Do not drive the vehicle and operate the test equipment at the same time. Any distraction may cause an accident.
- Refer to the service manual for the vehicle being serviced and adhere to all diagnostic procedures and precautions. Failure to do so may result in personal injury or damage to the test equipment.
- To avoid damaging the test equipment or generating false data, make sure the vehicle battery is fully charged and the connection to the vehicle DLC is clean and secure.
- Do not place the test equipment on the distributor of the vehicle. Strong electro-magnetic interference can damage the equipment.

## CONTENTS

TRADEMARKS .....	i
COPYRIGHT INFORMATION .....	i
DISCLAIMER OF WARRANTIES AND LIMITATION OF LIABILITIES.....	i
FOR SERVICES AND SUPPORT .....	i
SAFETY INFORMATION .....	ii
SAFETY MESSAGES .....	ii
SAFETY INSTRUCTIONS.....	ii
INTRODUCTION .....	1
ALL KEYS LOST VIA SMART MODE .....	1
ALL KEYS LOST VIA EXPERT MODE.....	12

## Introduction

This manual introduces how to conduct 2012 Audi A3 All Keys Lost on Auro OtoSys IM600.

Two options are available when accessing the IMMO function:

- Smart Mode – the IM600 tablet will read the vehicle information to identify the IMMO type.
- Expert Mode – the user can make selections step by step to locate the IMMO type.

➤ **Procedures before getting started:**

1. Connect the OtoFlash to the vehicle's DLC via the included main cable for both communication and power source.
2. Connect the OtoFlash to the IM600 tablet via BT pairing or USB connection.
3. Connect the IM600 tablet to the programmer UP400 via the included USB cable.
4. Make sure the user has access to WiFi service.

---

 **NOTE**

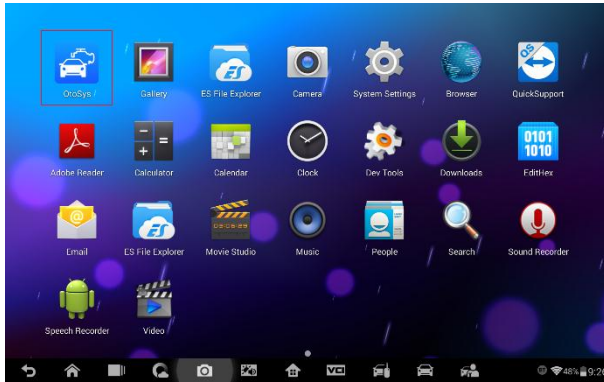
Illustrations used in this manual are samples, and the actual testing screens may vary by vehicle. Observe the menu titles and on-screen instructions to make correct selections and operations.

---

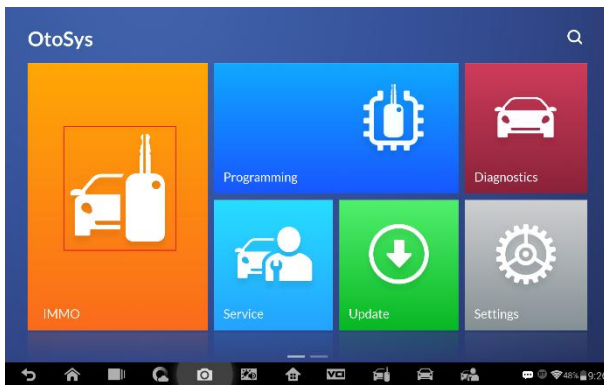
## All Keys Lost via Smart Mode

---

1. Turn on the IM600 tablet and connect to WiFi.
2. Tap **OtoSys > IMMO**. A vehicle menu displays and a disclaimer prompts up. Tap **Accept** to continue.



**Figure 1 Sample Main Interface**



**Figure 2 Sample OtoSys Job Menu**

3. Tap **Audi** on the vehicle menu.

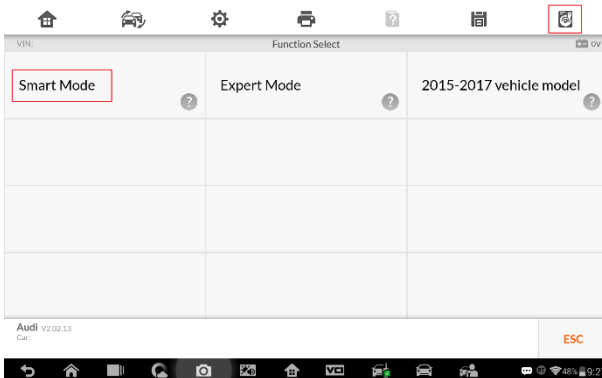


**Figure 3 Sample Vehicle Menu**

4. Tap **Smart Mode** on the mode menu and the IM600 tablet automatically identifies the vehicle information. Tap **Yes** to continue.

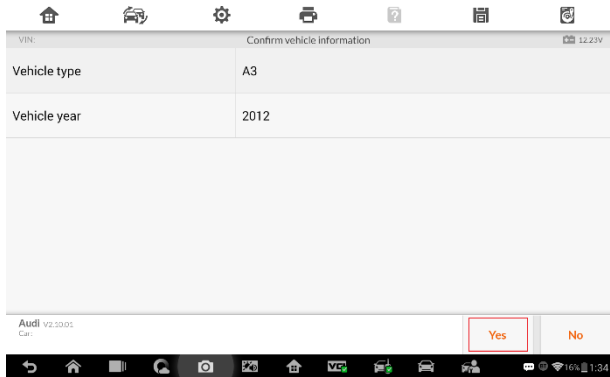
**NOTE**

You can click the icon near the top-right corner to record the operation data. If you encounter any difficulties, click the icon again to send us the data and the problem, so that our engineers could help.



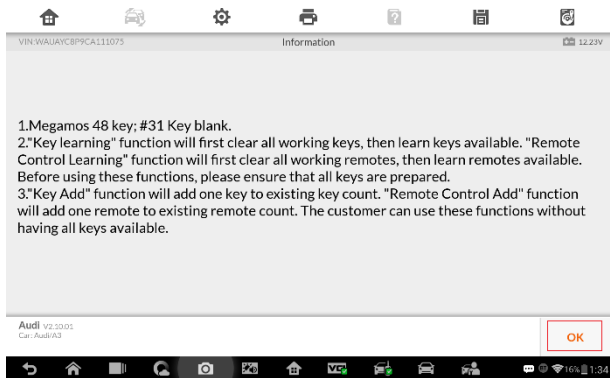
**Figure 4 Sample Mode Menu**





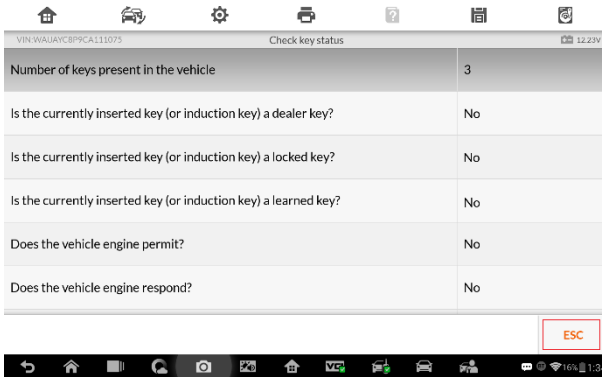
**Figure 5 Sample Vehicle Information Screen**

5. Read the information of Key Learning, Key Add and other functions if needed. Tap **OK** to continue.



**Figure 6 Sample Function Information Screen**

6. Check the key status and tap **ESC** to continue.

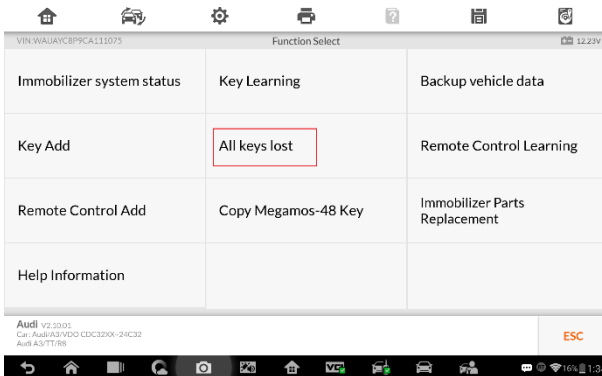


**Figure 7 Sample Check Keys Status Screen**

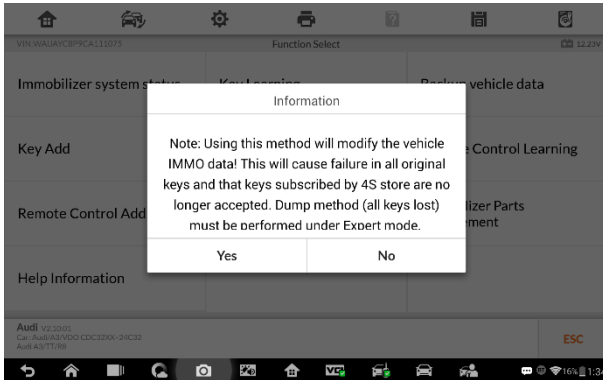
7. When the function menu displays, tap **All keys lost**.

**NOTE**

To perform the All Keys Lost function, the vehicle IMMO data will be modified and all the keys that are original or subscribed by dealers will not be accepted. Tap **Yes** to continue or tap **No** to quit the operation.

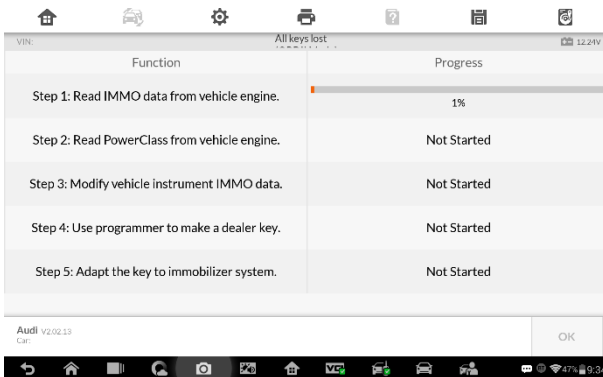


**Figure 8 Sample Function Menu**



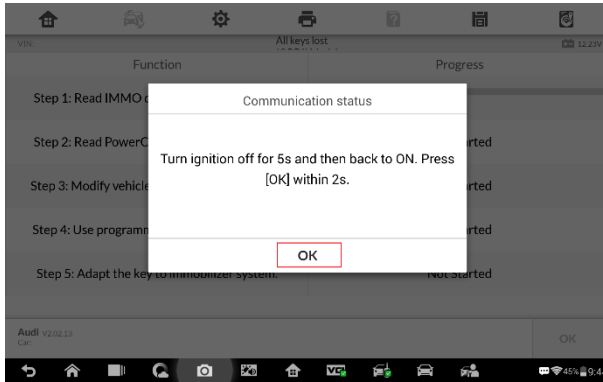
**Figure 9 Sample Information Screen**

- Once All Keys Lost starts, the IM1600 tablet performs five steps to complete the operation, i.e., Read IMMO Data, Read PowerClass, Modify IMMO Data, Make Dealer Key and Learn Key.



**Figure 10 Sample All Keys Lost Screen 1**

- When Read IMMO Data starts, follow the onscreen instruction to turn the ignition off and then back to ON or turn on hazard lights, and then tap **OK** to continue.

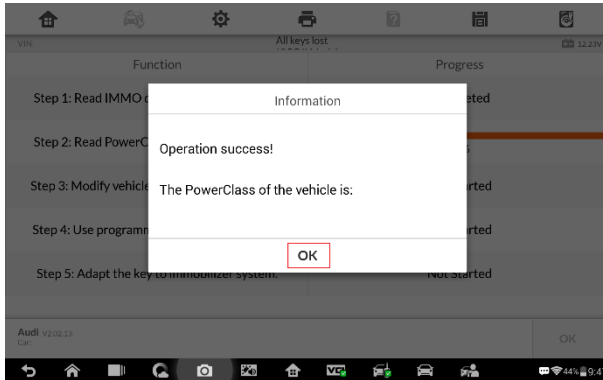


**Figure 11 Sample All Keys Lost Screen 2**

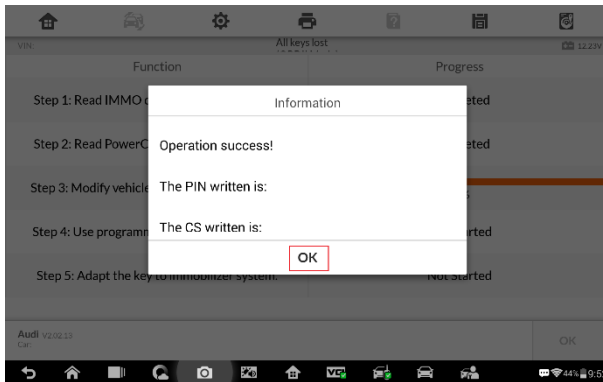
10. Read the information of the IMMO data from engine, PowerClass from engine and modified vehicle instrument IMMO data. Tap **OK** to continue.



**Figure 12 Sample All Keys Lost Screen 3**

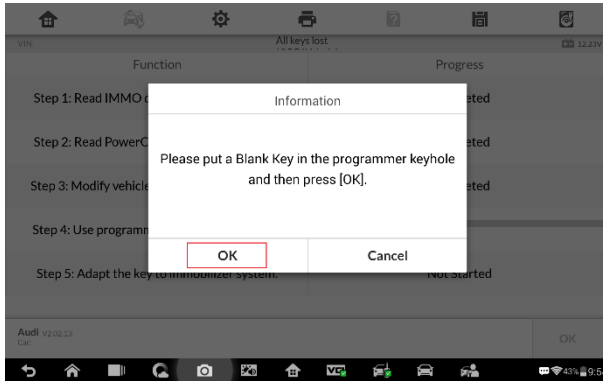


**Figure 13 Sample All Keys Lost Screen 4**



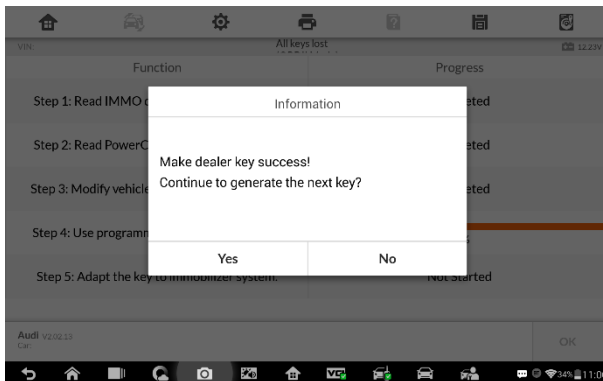
**Figure 14 Sample All Keys Lost Screen 5**

11. When Make Dealer Key starts, follow the onscreen instruction to put a Blank Key into the key slot of the UP400. Then tap **OK** to continue.



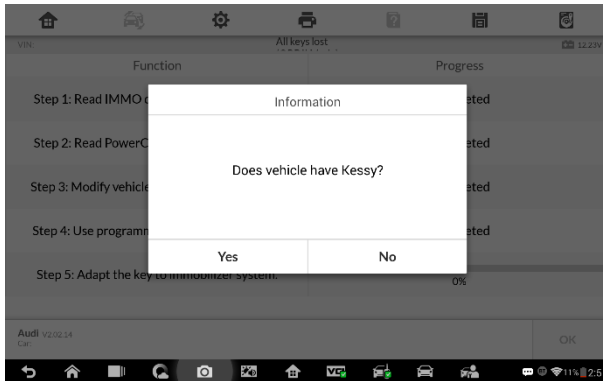
**Figure 15 Sample All Keys Lost Screen 6**

12. A “Make dealer key success!” message displays when the process is completed. Tap **Yes** to repeat step 11 and make the next dealer key with a new key; tap **No** to move to the next step, Learn Key.



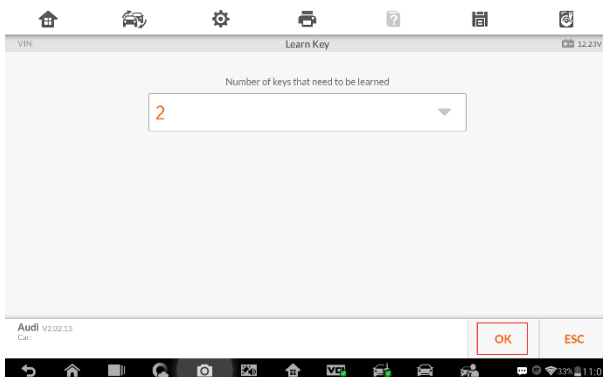
**Figure 16 Sample All Keys Lost Screen 7**

13. When Learn Key starts, a “Does vehicle have Kessy?” message prompts up. Make selection accordingly.



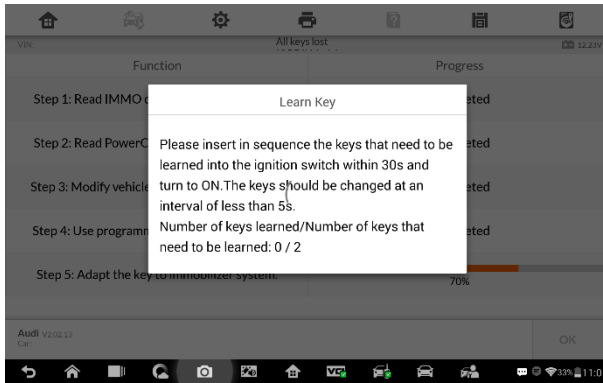
**Figure 17 Sample All Keys Lost Screen 8**

14. Input the number of keys to be learned and tap **OK** to continue.



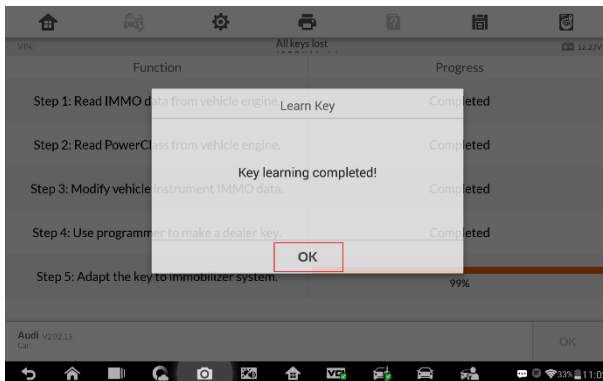
**Figure 18 Sample All Keys Lost Screen 9**

15. Follow the onscreen instruction to insert the keys to be learned into the vehicle ignition switch.



**Figure 19 Sample All Keys Lost Screen 10**

16. When a “Key learning completed!” message prompts up, tap **OK** to continue.



**Figure 20 Sample All Keys Lost Screen 11**

17. Follow the onscreen instruction to turn the ignition off and then back to ON. Tap **OK** to complete All Keys Lost and exit.



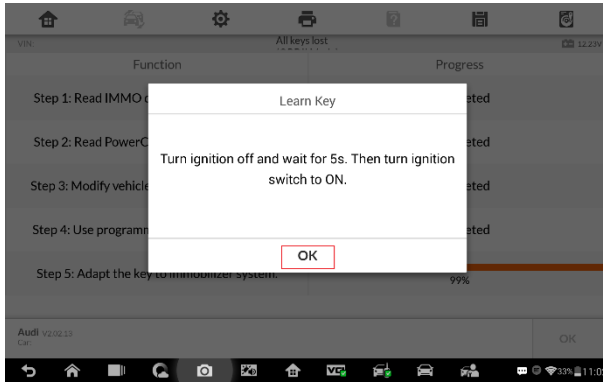


Figure 21 Sample All Keys Lost Screen 12

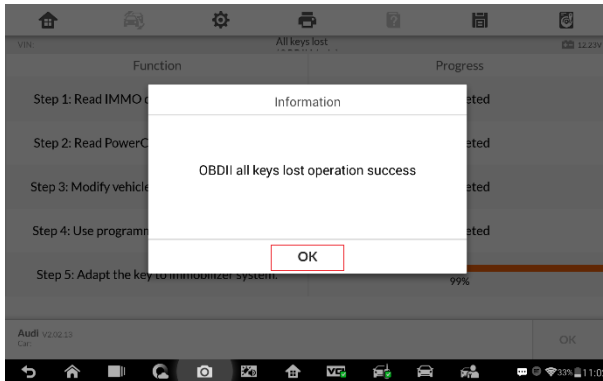


Figure 22 Sample All Keys Lost Screen 13

## All Keys Lost via Expert Mode

---

1. Turn on the IM600 tablet and connect to WiFi.
2. Tap **OtoSys** > **IMMO**. A vehicle menu displays and a disclaimer prompts up. Tap **Accept** to continue.



Figure 23 Sample Main Interface

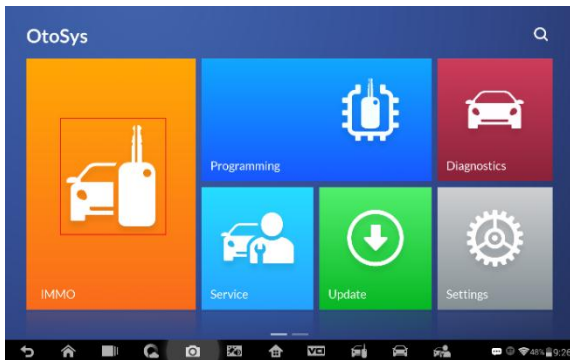


Figure 24 Sample OtoSys Job Menu

3. Tap Audi on the vehicle menu.

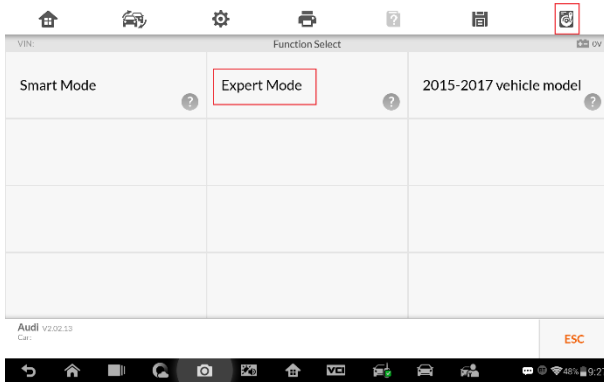


Figure 25 Sample Vehicle Menu

4. Tap **Expert Mode** on the mode menu.

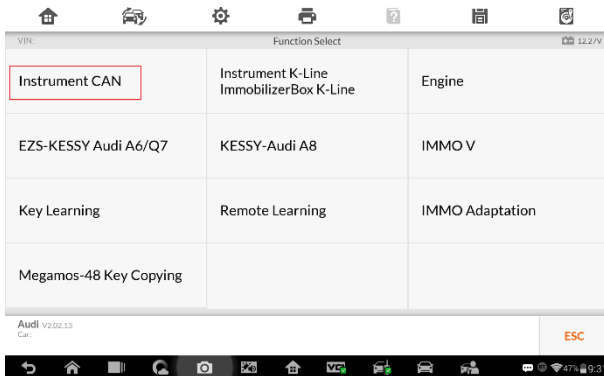
**NOTE**

You can click the icon near the top-right corner to record the operation data. If you encounter any difficulties, click the icon again to send us the data and the problem, so that our engineers could help.

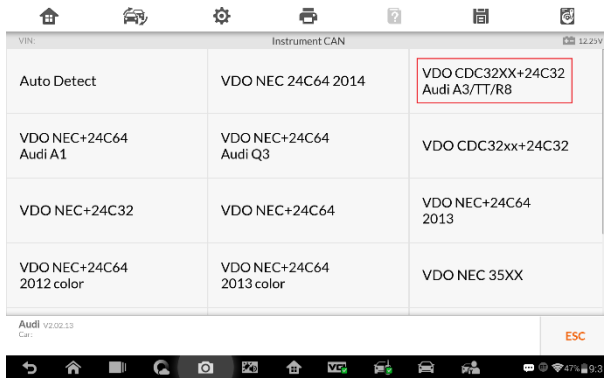


**Figure 26 Sample Mode Menu**

5. Tap **Instrument CAN > VDO CDC32XX+24C32 Audi A3/TT/R8** to step by step locate the IMMO type.



**Figure 27 Sample IMMO Type Select Screen 1**

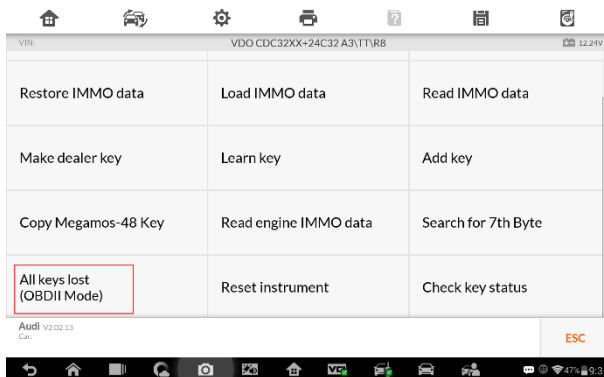


**Figure 28 Sample IMMO Type Select Screen 2**

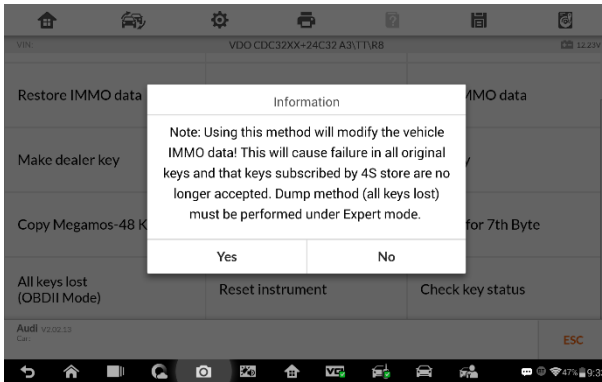
6. When the function menu displays, tap **All Keys Lost (OBDII Mode)**.

**NOTE**

To perform the All Keys Lost function, the vehicle IMMO data will be modified and all the keys that are original or subscribed by dealers will not be accepted. Tap **Yes** to continue or tap **No** to quit the operation.

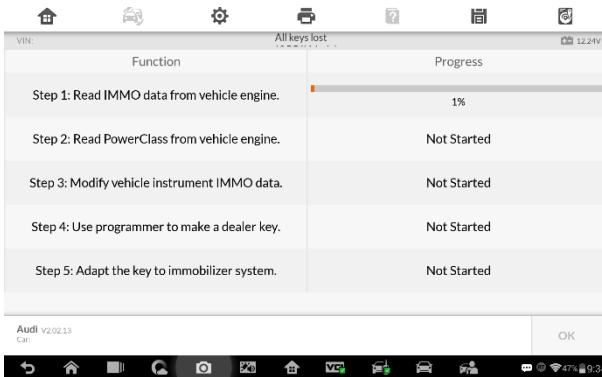


**Figure 29 Sample Function Menu**



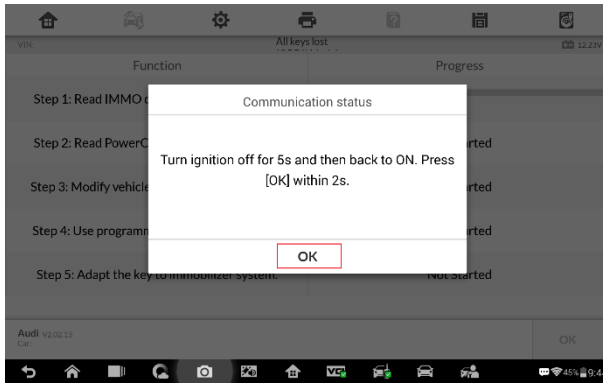
**Figure 30 Sample Information Screen**

- Once All Keys Lost starts, the IM1600 tablet performs five steps to complete the operation, i.e., Read IMMO Data, Read PowerClass, Modify IMMO Data, Make Dealer Key and Learn Key.



**Figure 31 Sample All Keys Lost Screen 1**

- When Read IMMO Data starts, follow the onscreen instruction to turn the ignition off and then back to ON or turn on hazard lights, and then tap **OK** to continue.

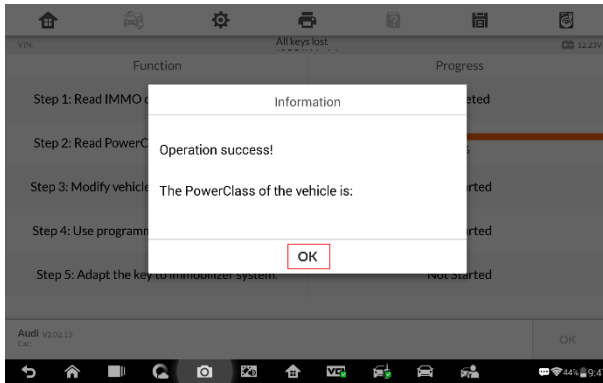


**Figure 32 Sample All Keys Lost Screen 2**

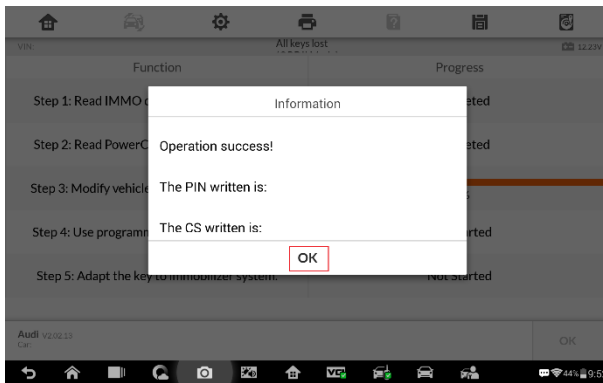
9. Read the information of the IMMO data from engine, PowerClass from engine and modified vehicle instrument IMMO data. Tap **OK** to continue.



**Figure 33 Sample All Keys Lost Screen 3**

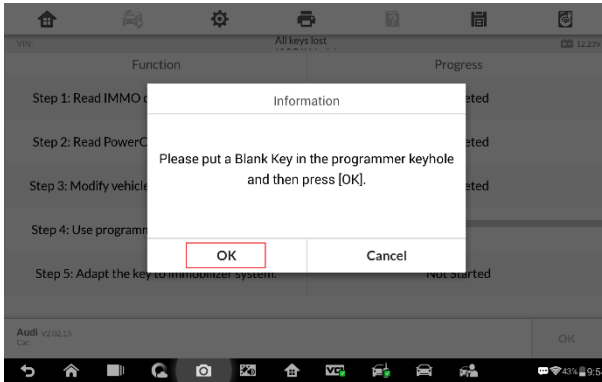


**Figure 34 Sample All Keys Lost Screen 4**



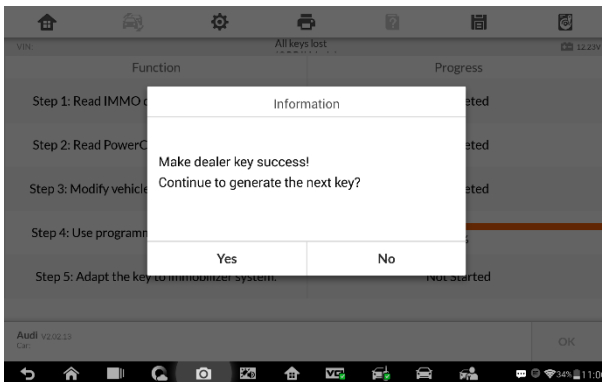
**Figure 35 Sample All Keys Lost Screen 5**

10. When Make Dealer Key starts, follow the onscreen instruction to put a Blank Key into the key slot of the UP400. Then tap **OK** to continue.



**Figure 36 Sample All Keys Lost Screen 6**

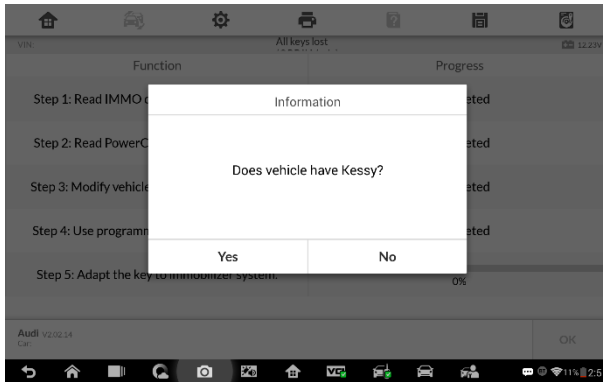
11. A “Make dealer key success!” message displays when the process is completed. Tap **Yes** to repeat step 10 and make the next dealer key with a new key; tap **No** to move to the next step, Learn Key.



**Figure 37 Sample All Keys Lost Screen 7**

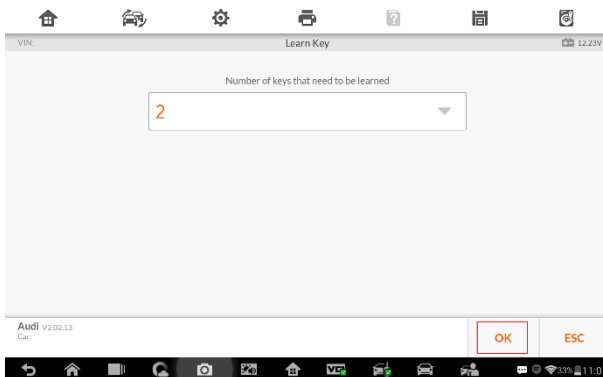
12. When Learn Key starts, a “Does vehicle have Kessy?” message prompts up. Make selection accordingly.





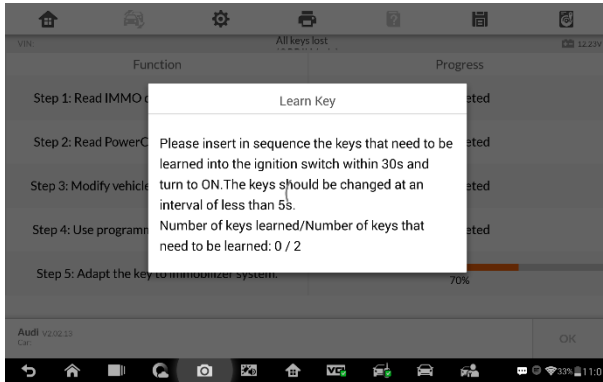
**Figure 38 Sample All Keys Lost Screen 8**

13. Input the number of keys to be learned and tap **OK** to continue.



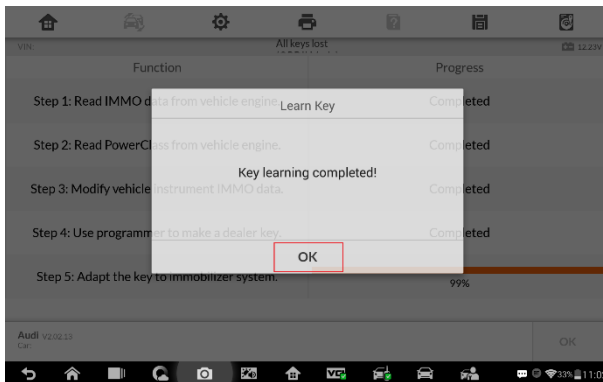
**Figure 39 Sample All Keys Lost Screen 9**

14. Follow the onscreen instruction to insert the keys to be learned into the vehicle ignition switch.



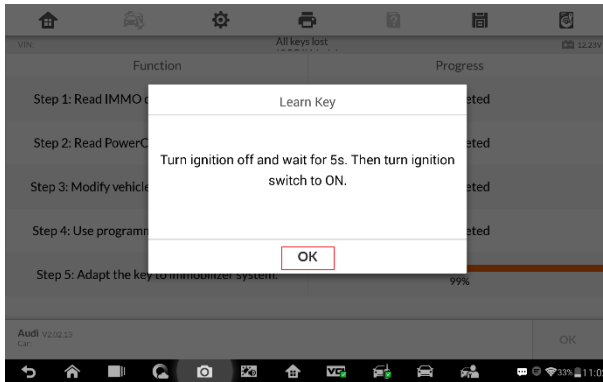
**Figure 40 Sample All Keys Lost Screen 10**

15. When a “Key learning completed!” message prompts up, tap **OK** to continue.

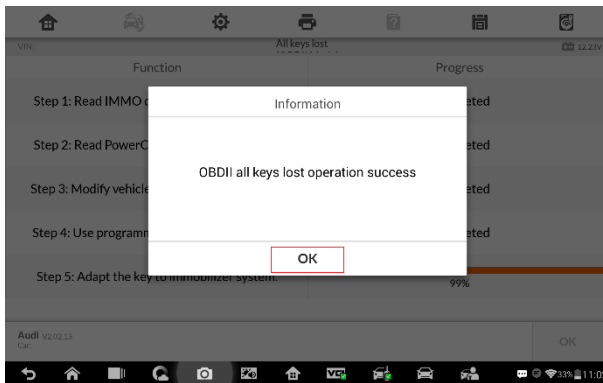


**Figure 41 Sample All Keys Lost Screen 11**

16. Follow the onscreen instruction to turn the ignition off and then back to ON. Tap **OK** to complete All Keys Lost and exit.



**Figure 42 Sample All Keys Lost Screen 12**



**Figure 43 Sample All Keys Lost Screen 13**